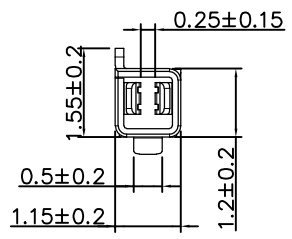
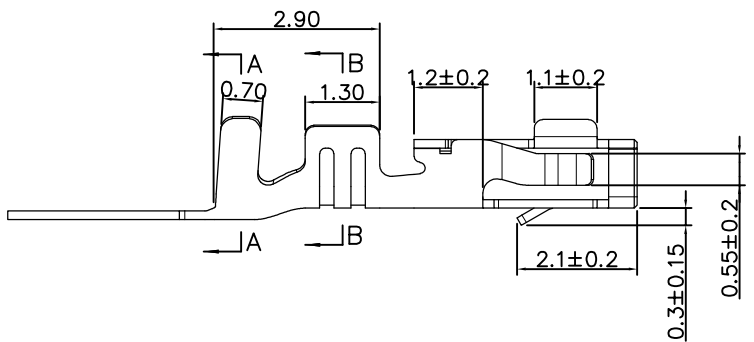
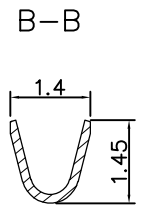
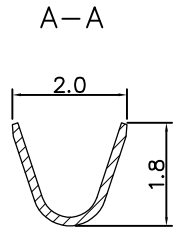
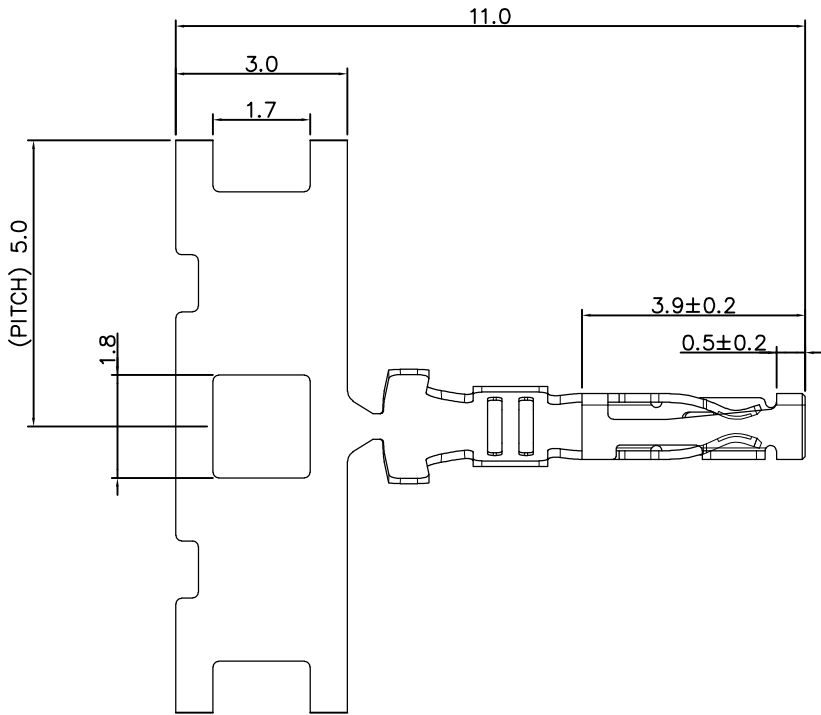


REV.	ECN NO	DESCRIPTION	REVISED	DATE
A		新订图面	LXM	23.12.19

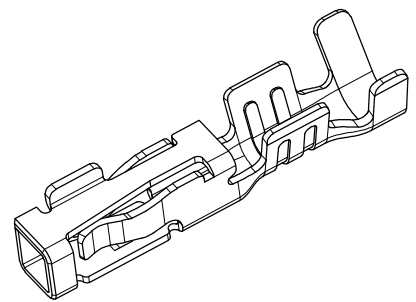


Specifications/技术规格:

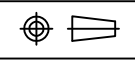
- Current Rating: 1A (AWG28#)
额定电流: 1A (AWG28#)
- Current Voltage: 100V AC,DC
额定电压: 100V AC,DC
- Insulation Resistance: 500MΩ Min.
绝缘电阻: 最小500MΩ
- Dielectric Withstanding: 500V AC 1Min
耐电压: 500V AC 1分钟
- Contact Resistance: 20mΩ Max.
接触电阻: 最大20mΩ
- Operating Temperature: -25℃ to +85℃
工作温度: -25℃ 到 +85℃

Materials/材料:

- Contact Material: Phosphor Bronze(Tin plating)
接触端子材料: 磷铜(镀锡)
- Recommended wire gauge: AWG30#-28#
推荐线规: AWG30#-28#



 浙江快利电子有限公司
Zhejiang Kuaili Electronic Co., Ltd

REV.	A	UNIT.	MM	SCALE.	---	
------	---	-------	----	--------	-----	---

GENERAL TOLERANCE	
X. ± X.	.*** ± 0.10
.X ± X.	.** ± 0.15
.XX ± XX.	. * ± 0.25
.XXX ± 0.5	*. ± 0.35

DESIGN:	张乐友	DATE:	25.03.19
CHECKED:	朱继衡	DATE:	25.03.19
AUDITED:	王子林	DATE:	25.03.19
APPROVED:	朱建华	DATE:	25.03.19

DWG. NO.	
PART NO.	KL-ZOM-TE

TITLE.	ZOM-TE
--------	--------